



LYNFIELD
COLLEGE

NEWSLINK

NEWSLETTER 4 | 25 MARCH 2022

From Principal Cath Knell

Mehemea ka moemoeā ahau, ko ahau anake.

Mehemea ka moemoeā tātou, ka taea e tātou.

If I dream, I dream alone. If we dream as a collective,
we can achieve our dream | *Te Puea Herangi*

Kia ora koutou

With the announcements this week about the limit on outdoor gatherings and the requirement for vaccine passes being lifted we will be able to welcome our parents and supporters back onsite for our winter season sporting fixtures. In addition, as of 12 March, all students are eligible to trial for these teams regardless of vaccine status.

Parent student teacher conferences

Next week we look forward to connecting with all of our parents at the Parent Student Teacher conferences. Although we would have preferred this to have been in person, the online option will still be a valuable way of making these connections. Our previous Progress Conference model saw us connecting with less than 50% of our families. We know we can improve on this and collectively work in support of our students, the goals they have set for themselves and their academic achievement.

Lifting of Rostering Home from 1 April

By the end of next week we will have sufficient staff to enable us to have all year levels back onsite. This means we will be lifting the rostering home schedule from Friday 1 April. All levels will return to onsite learning from this date.

Gifted Learners

We have some exceptionally gifted learners at Lynfield. Team 2915U is just one example. They are currently fundraising in support of traveling to Dallas for the [VEX Robotics World Championship 2022](#). Please consider how you can support these students in achieving their goal by contributing to their fundraising or by putting them in touch with potential Business / Corporate sponsors.

Noho haumarū - *stay safe and well*

Cath Knell

Tumuaki | Principal

IN THIS ISSUE

- *Principal's Message*
- *Sports or Creative, Innovative Scholarship*
- *Parent|Student|Teacher Conferences*
- *Student Executive 2022: Deputy Head Girl and Boy*
- *Community Week*
- *Debating Success*
- *Year 9 Activities*
- *Shinagawa Connection*
- *VEX Robotics Australia / NZ Live Remote Tournament*
- *Make Tonga Your Valentine*
- *Supporting Our Gifted Learners*
- *Year 9 Whānau Hui Questions Answered*
- *Winter Uniform*
- *SportsScene*
- *Individual Sports Honours*
- *Tuckshop Breakfast Menu*
- *Lions Young Speechmaker Contest 2022*
- *Covid-19 Protection Framework Updated*
- *AT Travelwise Free Young Drivers' Workshops*

The Lynfield College Sports or Creative, Innovative Scholarship

Lynfield College Board of Trustees is delighted to be able to offer this scholarship for 2022.

Any student who is representing their chosen activity (sport or creative, innovative) at regional, national or international level may apply for these scholarships. The School Board have decided there will be only one round this year.

Recipients may use the scholarship to assist with expenses directly related to the activity in which they excel while they are representing the College. Application forms: <https://www.lynfield.school.nz/Curriculum/Scholarships.html>

Parent Student Teacher conferences

You can now make an appointment for the Parent Student Teacher Conferences on School point.

You will have received an email last week with the booking instructions. The booking site opened Monday 21 March at 9.00am and will close on Wednesday 30 March at 9.00am.

Unfortunately, due to Covid 19 restrictions, we will need to hold our PST Conferences online.

This is not ideal, but we hope to connect with as many parents / caregivers as possible despite the challenging circumstances.

You will be aware from our previous communications that in recent weeks we have had a significant number of staff absent due to Covid and this may occur the week of the conferences. We ask for your understanding should a meeting not be able to go ahead. We will inform you via email on the day, and your child's Hui mai teacher will follow up with you via phone call.

The online Conferences will be on Wednesday 30 March between 4.00 pm and 7.00 pm and Thursday 31 March between 9.00 am and 3.00 pm

Appointments can only be with your child's HUI MAI teachers. Should you wish to speak to a subject teacher, your child's Hui mai teacher will guide you in the process for contacting them.

The focus of this first meeting will be goal setting. Your child is expected to attend these conferences with you, and they will lead the conversation. They are preparing for this in their Hui mai lessons.

School will finish early at 2.30 pm on Wednesday 30 March and school is closed on Thursday 31 March, so the conferences can take place.

Your child's Hui mai teacher is looking forward to meeting with you.

Term 1 Progress Reports

The reports were added to the Portal on Wednesday 23 March.

This report focuses on the progress your child has made against several key competencies during Term 1. A more detailed Report will be issued in July for Junior students and in August for Senior students.

Student Executive 2022: Deputy Head Girl and Boy

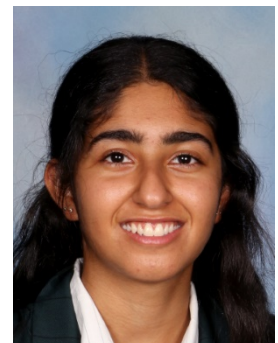
We have the privilege of serving as the deputy head students for 2022, and work alongside the rest of our 2022 Student Executive team. Our goals go beyond the gates of our school, to create an integrated environment through connections and active participation. This year our key goals are integrating better and increasing our presence within the school, but also to encourage student participation in the wider community. Therefore, we all hope to hear more from you soon!

Recently, we have been focused on several key proposals that we hope you'll know more about soon! Naturally, of course we've been heavily involved in planning this year's school Ball (Covid permitting of course, like all things!), and have been busy contacting venues to really make it a night to remember for our Year 13 students who are leaving this year!

Other key projects which we've been working on, have been aimed at increasing student involvement in the wider community. The Heads and Deps team have been closely looking at opportunities for students to take on within the school, and outside of it, such as new extracurricular activities. We also have a proposal for an event to encourage students to engage with the community, however as this is in the early stages of planning we can't discuss it too much.

And so, as the year goes on, we look forward to getting involved, working with, and meeting our extended Lynfield community.

Oliver Pracy and Teesha Sharma



Community Week

Our Student Executive team is organising a Community Week to be held in Week 10 of this term. It is a fun and event filled week-long event bringing together our Lynfield College community following a challenging term while at the same time supporting the wider community. Community Week aims to get students involved, raise House pride and embody our value for Week 10, *'We are active in our community'*.

Throughout the week a students vs staff tapuae game, lunchtime performances and a stall to write appreciation cards for students and staff will all be held. These activities are all about connecting Lynfield to finish off a disrupted term.

Our House Captains and Hui mai representatives will be working to support charities in the wider community. Each house will be supporting a different charity based on their house colour, which will match the colour of their charity. Stalls will be held during the week raising awareness for each cause. Proceeds from the day will go towards the charities supported by our Houses during Community Week.

| HOUSE | COLOUR | CHARITY |
|-----------|--------|------------------------|
| Bray | Blue | Make a Wish Foundation |
| Fatialofa | Red | Red Cross |
| Faumuina | Yellow | Cancer Society |
| Lewis | Green | Greenpeace |
| Reid | Black | St John |
| Zoricich | White | Kids Can |

Debating Success

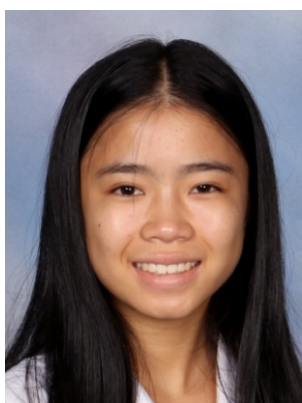
Although the full year competition has yet to start, three experienced Lynfield teams competed in the Auckland-wide Seasonal Debating competition on Saturday 12 March. All team members did well, but special congratulations go to **Leigh Hine, Sophie Yang, Uday Jain** and **Eesha Mahimkar**, whose team won all their debates on the day and came second overall out of 33 teams. Uday Jain also deserves to be congratulated as he was named third best overall speaker out of over 100 of Auckland's top young debaters. These successes are all the more impressive when one considers that all debates were held on Zoom, a highly challenging medium for this activity. We have high hopes for the three or four teams entering the Regional Competition which will be held over the weekend of 2 and 3 April.

Lynfield College will continue its proud involvement in all grades of the annual competition this year. We have eleven teams in the Open grade (Juniors, Seniors and Advanced) and four in the Premier grade (Juniors and Advanced), each of whom will debate five to seven times, before the 'break'. The break is when the teams for the octo-finals are decided. In previous years between five and eight teams have made it to these finals. All the best to our debaters!

The College will continue to host the Western Division of the Junior Open under the guidance of Ms Barker and seven capable senior debaters, of whom five are about to train as adjudicators themselves.



Leigh Hine



Sophie Yang



Uday Jain



Eesha Mahimkar

Year 9 Activities

Print Projects

Here are some samples of Year 9 lino prints. We finally got there! The prints are roughly A5 in size and lino was used as a plate to take prints from. Students had to use the initials of their name and add cultural references into their designs. Several concept designs were drawn and then their best ideas were used to create the final design. After a number of lessons to develop sufficient skills for carving, we moved to the printing stage.

Students are working hard and are keen to do some painting for our next project.



Pounamu Teach 9BLL the College Haka

Pounamu senior akonga teach 9BLL the school haka outside Te Ringa Awhina, our school marae, which means helping hands. Further junior classes have requested to book a hui mai time to learn the haka.

This is a way Pounamu can demonstrate the concept of Tuakana-Teina where senior akonga help out teina (younger students).

Whakarongo Mai Ra, Ko Te Kaareti o Pukewiwi Hi Ha Hi!



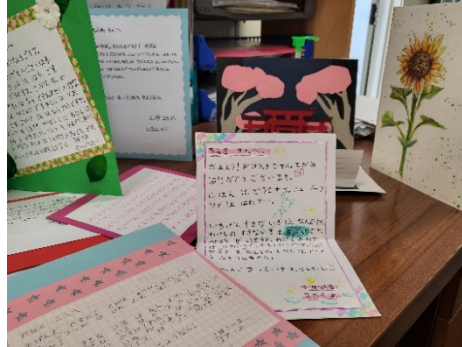
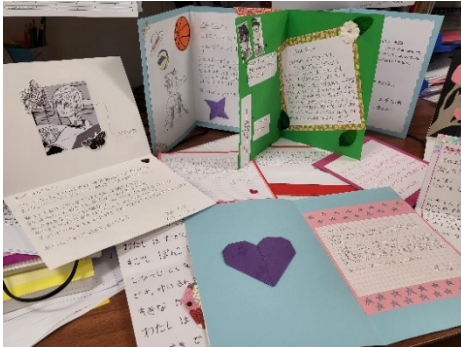
Year 9 Hui Mai Wero While Rostered Home

With Friday being the day Year 9s are rostered home it has meant they only see their Hui mai class once a week. While they have been busy working on their goals and preparing for the upcoming PST conferences there has also been the odd wero (challenge) set. For example, for one class it was who can take the best nature shot with no man-made objects included. Great dedication getting up to take a photo of the sunrise but as many man-made objects were included, the winner was Zeus Mehta who captured his cat lazing on the grass (after a meal? Spot the feathers).



Lynfield Japanese Classes Connect with Shinagawa Students

This term, our school received a surprise gift from our sister school, Shinagawa Gakuen, Japan. Lynfield College has had a friendship delegation with Shinagawa since 1994. Our students were excited to receive mascots from the Tokyo Paralympics 2020 and hand-made seasonal greeting cards from Shinagawa Gakuen students. This was a good opportunity for our students to utilise the Japanese language they have learned so far this term. Lynfield students made amazing hand-made cards to send to our Shinagawa Gakuen students. During the card making, our Year 11s were excited to learn new words and phrases to use in their cards. It was a great experience for our students as they felt more connected to the students in Japan. Below are our Lynfield College Year 11 Japanese students' hand-made cards, which will be delivered to Japan this week.



VEX Robotics Australia/New Zealand Live Remote Tournament

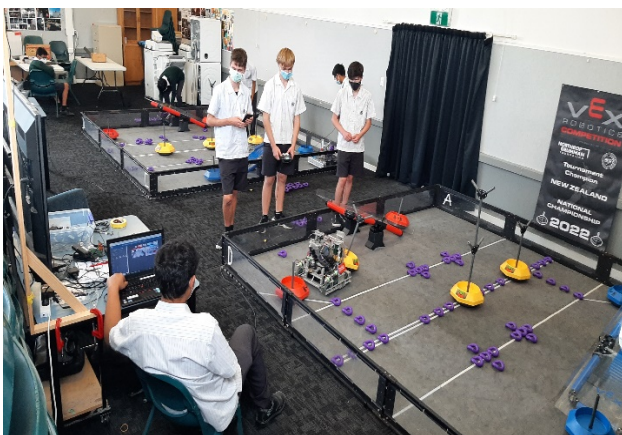
On Tuesday 22 March, Lynfield College had two VEX Robotics Teams compete in the Australia/New Zealand Remote Online Tournament. This involved having two fields setup complete with web cameras and computers signed into an international competition control system.

During the qualification rounds, the two Lynfield teams led the ranks right up until very last match when an Australian team squeezed into second place, knocking out one of our teams.

The finals were between the top two ranked teams, at true ANZ final. Our team competed well, but unfortunately we were beaten into second place by 1 point, Lynfield 265 – Australia 266.

It was a great day, with a big learning curve for both our teams, as neither had competed in a Live Remote Tournament before. Both of these teams will compete in the VEX Worlds Championships in May, one in person in Dallas, Texas, the other via Live Remote Tournament here.

Lynfield College Robotics Team 2915U is seeking funding and fundraising opportunities to enable them to travel to the VEX Robotics World Championship in Dallas, Texas from 5 – 7 May 2022. If you are able to sponsor the team in any way, please follow this link: [Sponsorship Letter](#)



Make Tonga Your Valentine

Malo e lelei kainga

On 14 February many celebrated Valentine's Day by recognising their love for each other, however at Lynfield College students and staff celebrated Valentine's Day by making Tonga their Valentine.

The Young Māori and Pacific Pride Leaders along with the Student Exec, encouraged staff and students to get behind Tonga by bringing in a non-perishable item to school. Through the efforts of all who contributed, we were able to gather a large sum of non-perishables to assist Tonga.

These items were collected and distributed to a non-government funded disabled school in Tonga.

We were so proud of how the community supported this initiative and supported not only Lynfield but more importantly Tonga through their hardship.

We were also able to donate to the Red Cross Appeal for Tonga. The school alongside staff raised over \$900.

We would like to thank our Lynfield Community staff and students for always recognising the importance of helping others.

Malo aupito. 'Ofa mei he kau taki 'o e kau taki Maui mo e Pasifiki mo e Kolisi Lynfield.



Supporting our Gifted Learners

Gifted new entrants are identified via transition information provided from intermediate schools, enrolment information, beginning of the year asTTle testing scores and individual teacher observation. In addition, there are ongoing identification measures in place for other year levels.

Our gifted learners are supported by independent classroom teachers providing extension activities, access to competitions, extra-curricular activities and diverse learning programmes. These students follow an enriched curriculum with a particular focus on developing higher order thinking skills.

We aim to foster their creativity and critical thinking in a supportive and inclusive environment. Students are provided with a range of opportunities, both within and outside of the classroom, to broaden and deepen their knowledge and acceleration in key areas. Junior classes also benefit from involvement in cross-curricular projects.

Further information can be found on the Lynfield College website.

Tess Morrison, Gifted Education Programme Coordinator

Year 9 Whānau Hui

Thank you to all of our whānau who either joined us online or watched the presentation at another time. We would particularly like to acknowledge our students who contributed. Here are answers to some of the queries that were raised.

How to contact subject teachers

If you have any queries specifically about your child's progress in a subject, please contact the subject teacher via email. For queries relating to your child's wellbeing, please contact the Dean, Stu Braithwaite, sbraithwaite@lynfield.school.nz

Keeping track of your child's work

Schoology should be the first place to look to see what work is being done in class.

We give flexibility for teachers in assigning homework, and this will vary between classes and subjects. Teachers and faculties have their own processes for following up on homework that is not completed. This will usually involve a conversation with the student, an opportunity to make up the missed work, then possible punitive measures such as lunchtime detentions. The parents are not usually notified of one-off issues as we want the students to take responsibility for their own behaviour and learning. However, repeated issues will be referred to the Hui mai teacher.

Tests, assessments and exams

You can view the course outline for each Year 9 course on Schoology.

Go into **Courses/Year 9 Students/Materials/Course overviews**. If the Year 9 Students course doesn't come up, click on **My Courses** and scroll to the bottom. The course overviews have details about the assessments for each course.

As part of teaching and learning, students will also have formative assessments in class. You can read our Junior Assessment guide on Schoology. Go into **Courses/Year 9 Students/Materials/Assessment Guide**. We do not have end of year exams for Year 9 students.

Support for learning

In the first instance, we encourage the students to speak with their subject teacher. The teachers will recommend some action which could include a tutorial session, some additional resources, or some differentiated classwork.

The **ESOL Homework Centre** is held on Wednesdays from 12.45 to 1.25 pm in L7.

Assistance is provided to English Language Learners (migrants, refugees, international students), by ESOL staff and 25 volunteer Study Buddies, senior students with strengths in English, Sciences, Maths, Economics, Accounting and History. Mr Bangs assigns Study Buddies to students. Due to high numbers, in term 1 and until further notice, this centre operates in the following way:

Study pairs (study buddy + student needing help) meet outside L7 then move to appropriate spaces allocated by Mr Bangs.

Winter Uniform

With the arrival of the cooler weather, it's a good time to purchase warmer uniform items. The following is available from the Uniform and Stationery shop:

Showerproof Jackets, all sizes \$93 | **Fleece Jackets**, all sizes \$91 | **Green Woollen Jumpers**, from \$98 to \$110
Windbreaker Jackets, \$30 (this is a discontinued item however there are still XS and S sizes available).

The Shop will be open as normal for all students on site for their uniform and stationery needs during **interval and lunchtime Monday to Thursday and 8am to the end of interval on Friday**. Please note that the shop will be closed on Thursday 31 March for stocktake.

We are able to accommodate parents/caregivers on site to assist with uniform fittings or purchases **by appointment only**. For an appointment please book on Schoolpoint with instructions on using Schoolpoint [here](#)

Online ordering is available through our website <https://www.lynfield.school.nz/shop.html>. Payment can be made by direct credit or credit card and students onsite are able to collect the items from the Shop during the above times. For any further queries please email Nicky Pin at uniformshop@lynfield.school.nz

SportsScene

AUCKLAND SECONDARY SCHOOLS ATHLETICS

This year there were no zone meets for athletics, instead all athletes who met the qualifying times and distances were able to enter the AKSS Champs directly. Our team was **extremely** competitive and represented our school with pride. For further information and photos visit the *Lynfield College Sports* facebook and Instagram pages.

Congratulations to the following students:



Percy Maka (Year 13)
1st Senior Boys Discus



Fiona Siapo (Year 11)
2nd Intermediate
Girls Discus
2nd Intermediate
Girls Shot Put



Rina Maka (Year 12)
13rd Intermediate
Girls Discus



Troy Maka (Year 10)
1st Junior Boys Discus
New AKSS Record 60.28m
1st Junior Boys Shot Put

TEAM TALK

Summer Sports

These are coming to an end after a very difficult season punctuated by players needing to isolate and the resulting defaults and deferrals. The next NewsLink will have wrap up from each of our summer teams.

The junior boys cricket team plays in the final for their grade tomorrow.

Winter Sports

Trials for some teams are completed while we are in the process of completing others. Teams lists are posted on the Sports noticeboard when trial selection is finalised.

In preparation for winter sports going ahead next term, please consider whether you will be able to facilitate this in any way:

Coaches and managers are urgently needed for these winter sports: Football, Basketball, Netball, Hockey, Table Tennis.

Please take time to consider whether you could coach or manage a team. Remember, to manage a team you do not need knowledge of the sport, just to be a channel for communication between coach and players as needed and help organise (not necessarily provide) transport to games.

We will not enter a team into a competition unless it has both a coach and a manager!

If you or anyone you know is able to help us in any way we would really like to hear from you. There are plenty of openings available!! Please contact the Sports Office 627 0600 ext 595 or email Felicity Walbran (Sports Director) fwalbran@lynfield.school.nz

Individual Sports Honours

Congratulations to our students who have achieved outstanding results in their chosen sports:

Troy Maka (Y10)

Troy's 60.28m Discus throw in the AKSAS Athletics meet broke a 30 year old 13 Boys World Youth Record (1992 60.20m).

<http://age-records.125mb.com>

This week Troy also competed at the Daikin, Night of 5's last night at the AUT Millennium. His goal was to break another World Youth Record 13B Discus 750 gms before his 14th birthday (25 March 2022), he threw a massive 69.25 m! (Previous record 62.08 m, 2919, Finland) Troy has now broken six World Youth Records.

Kevin Zhang (Y11)

In the Western Zone swim meet Kevin had great success:

GOLD in Backstroke, Breaststroke and Freestyle, and **SILVER** in Butterfly

If your son and/or daughter has achieved representative status (Auckland or New Zealand) or has competed in such events the Sports Office would very much like to hear about this. Please either ask them to bring proof of the team they made/ level they achieved (e.g. certificate, letter of selection etc.), so we have the exact wording of their achievement, or email these details to fwalbran@lynfield.school.nz

Lynfield College Tuckshop

The tuckshop will be opening for breakfast from next Monday 28 March. A selection of hot and cold food items will be available. See the tuckshop menu and price list below.

Lynfield College Tuckshop Menu 2022



Breakfast Menu 7.30am to Bell

| | |
|---|---------|
| v Hashbrown | \$ 0.60 |
| Brown Toast - 2 slices \$0.80 / 4 Slices | \$ 1.50 |
| Scrambled Egg Roll | \$ 3.50 |
| Fruit Salad | \$ 2.00 |
| Yoghurt | \$ 2.00 |
| Hot Milo | \$ 2.00 |
| Cereal - Weetbix / Cornflakes | \$ 2.50 |
| Nutri-Grain / Coco Pops with low fat milk | |

Sandwiches - Brown Bread

| | |
|-----------------|---------|
| Chicken & Salad | \$ 3.70 |
| Chicken & Mayo | \$ 3.70 |
| Ham & Salad | \$ 3.70 |
| v Egg | \$ 3.70 |
| v Vegetarian | \$ 3.70 |

Hot Meals

| | |
|---------------------------------------|---------|
| DF Chicken Teriyaki on Rice (GF Opt.) | \$ 5.50 |
| Katsu Chicken on Rice | \$ 5.50 |
| Spaghetti Beef Bolognese | \$ 5.50 |
| Beef Nachos with Cheese (DF Opt.) | \$ 5.50 |
| Loaded Wedges With Bacon (V. Opt.) | \$ 5.50 |
| v Mushroom & Spinach Fettuccine | \$ 5.50 |

Hot Food

| | |
|--|---------|
| Chicken Wrap - BBQ or Sweet Chilli | \$ 3.70 |
| Fish Sub | \$ 3.70 |
| American Hotdog | \$ 4.00 |
| Meatball Sub | \$ 4.00 |
| DF Pork Bun | \$ 3.50 |
| Lasagne Toppa | \$ 3.50 |
| v Noodles | \$ 3.50 |
| Pies - Steak & Cheese / Mince / Mince & Cheese | \$ 3.50 |
| Sausage Rolls | \$ 3.50 |
| v Garlic Bread (5 Pieces) | \$ 2.50 |

Fresh Salads

| | |
|--------------------------------------|---------|
| GF DF Chicken Salad with Aioli | \$ 5.50 |
| Chicken & Pesto Pasta Salad | \$ 5.50 |
| v Pesto Pasta Salad with Cherry Torr | \$ 5.50 |
| v DF Vegetarian Salad | \$ 5.50 |

Fresh Fruit

| | |
|-------------------------|---------|
| Apple | \$ 1.00 |
| Freshly Diced Fruit Cup | \$ 2.50 |

Loose Change Options

| | |
|----------------------|---------|
| v Spring Rolls - (4) | \$ 2.00 |
| Popcorn Chicken | \$ 2.00 |

Cold

| | |
|---------------------------|---------|
| Fruit Salad / Yoghurt | \$ 2.00 |
| Jelly - Raspberry or Lime | \$ 2.00 |
| Moosies / Juicies | \$ 2.20 |
| DF Juicie Tubes | \$ 2.50 |

Other

| | |
|-----------------------------|---------|
| V Chips | \$ 2.30 |
| - BBQ / Sour Cream & Chives | |
| Doritos | \$ 2.30 |
| Raspberry Liquorice Log | \$ 2.20 |
| Black Liquorice | \$ 2.20 |

Drinks

| | |
|---------------------------------|---------|
| Aqa - Sparkling Flavoured Water | \$ 2.50 |
| - Lemonade / Peach / Orange | |
| Water 1.5L | \$ 2.50 |
| Water 750ml | \$ 3.00 |
| Water 600ml | \$ 2.00 |

Extras

| | |
|-------------------------|---------|
| Tomato Sauce | \$ 0.50 |
| Wooden Fork or Teaspoon | \$ 0.20 |
| Tissues | \$ 1.00 |
| Throaties | \$ 3.00 |

V = Vege DF = Dairy Free GF = Gluten Free

(Made in an environment that contains gluten, dairy and meat products)

EFTPOS AVAILABLE

Lions Young Speechmaker Contest 2022

Students interested in entering this contest can open the following link for competition rules, criteria and application form: <https://www.lionsclubs.org.nz/services/youth/young-speechmaker-contest#:~:text=The%20Lions%20Clubs%20of%20New,through%20your%20local%20Lions%20Club>



Young Speechmaker Contest

The Lions Clubs of New Zealand offer youth from 16 to 21 years of age (as at 15 Nov 2022), the opportunity to participate in a national public speaking contest. Entry is free to the contestants and open to the public through your local Lions Club. Generally, there will be at least a district contest with the winner/s coming forward to the National Final in Palmerston North on Sat 13th August 2022.



What is the Young Speechmaker Contest?

Your local Lions Club will contact your School or Youth Group and offer to sponsor speakers for the District contest. They will provide copies of the Rules, and the Judges briefing and score sheets so you have a good understanding of the contest expectations.

The District contest/s are all to be completed by the 30th June 2022 and up to two contestants from each District will come to the National (MD202) Contest on Saturday 13 August 2022 in Palmerston North. Travel arrangements and venue details will be provided by Lions at no cost to the contestants early in July 2022.

We encourage participation and support from fellow students, their families and Lion Club members at all contests. The only cost involved in attending is the catering charge (typically around \$15) for morning tea, lunch and an afternoon tea before you all head home. Contestants are paid for by Lions.

Prizes are awarded to all winners. A4 Certificates of Appreciation are provided for all contestants to place in their CV. At national level good prizes are provided by our sponsors for the top three winners.

Attached with this flyer are the rules and entry form.
We look forward to your students' participation.

Blockhouse Bay- Lynfield Lions Club, your local club, has sponsored students from Blockhouse Bay and Lynfield high schools for many years and would like to again showcase our local youth in this great competition.

Please return entry forms direct to Youth Co-ordinator,
<mailto:blockhouse.bay@lionsclubs.org.nz>



Winners of the 2021 NZ Lions Young Speechmakers Contest



Mia Hollingworth 2021 NZ Lions Young Speechmaker Contest Winner

Mia's speech was on the topic of fake news. You can read more about Mia and her achievement in the Southland Times article of Sept 21 [here](#).

Understanding the COVID-19 Protection Framework at Red Light Phase 3

Household Contacts what you need to do



Do you live with someone who has tested positive for COVID-19? Visit [Covid19.govt.nz/household](https://www.covid19.govt.nz/household) and follow these steps:

Stay home* and isolate for 7 days from the day the person with COVID-19 tests positive (Day 0). Try to avoid contact with them if you can.

Take a test on Day 3 and Day 7 (or sooner if you develop symptoms).

Tested negative? You still need to finish your 7 days of self-isolation.

Tested positive? You will need to start a new 7 days. Please follow the guidance on our website.

Did someone else in your house test positive? You don't need to restart your 7 days (unless you test positive).

COVID19.govt.nz/positive

You can complete your self-isolation at the same time as the first person in your house who had COVID-19 if your Day 7 test is negative, and you have no new or worsening symptoms. Tino pai!

* Some people who are Household Contacts and critical workers may be able to still go to work through the Close Contact Exemption Scheme. See our website for more information.

Te Kāwanatanga o Aotearoa
New Zealand Government

Unite against COVID-19

Updated 12 March 2022



WHAT TO DO IF YOU TEST POSITIVE FOR COVID-19

Follow these steps so that we can look after you and your schoolmates.

STEP 1: LET US KNOW



Email absence@lynfield.school.nz or phone 627 0600, Extension 729. We keep your health information private.

STEP 2: TRACK YOUR MOVEMENTS

One of the Deputy Principals will call you to find out some more information. They may ask who you were with at lunchtime, did you visit the Nurse, had you played sports, etc.



STEP 3: SELF-ISOLATE



Follow the guidelines from Public Health at www.health.govt.nz. If your symptoms get worse, seek medical advice immediately (your doctor or Healthline 0800 611 116).

STEP 4: LOOK AFTER YOURSELF

The DP will ask if there's anything you need. We can help you with a device or other support you and your family might need.



STEP 5: KEEP CONNECTED

Work will be posted on Schoology. Try and keep up, but let your teachers know if you're not able to.




AFTER YOUVE ISOLATED

Forward your notification of release to absence@lynfield.school.nz. We look forward to welcoming you back to school.

Information from the COVID Protection Framework Red Phase 2, 14 February 2022.

Testing positive at different times



| | Day 0 | Day 3 | Day 7 | |
|---------------------------|------------|---|--|---|
| OG Case | A + | Self-isolates for 7 days. Can leave after 7 days if no new or worsening symptoms. | | |
| Household Contacts | B | + | Self-isolates, and tests positive on Day 3. Starts a new 7 days of self-isolation. Can leave after 7 days if no new or worsening symptoms. | |
| | C | | + | Self-isolates, and tests negative on Day 3. Tests positive on Day 7. Starts a new 7 days of self-isolation. Can leave after 7 days if no new or worsening symptoms. |
| | D | | | + |

Te Kāwanatanga o Aotearoa
New Zealand Government

Unite against COVID-19

+ when you test positive, or when you first develop symptoms, whichever comes first, is your Day 0.

Free Young Drivers' Workshops

Did you know that we offer free driver licence workshops? If you or someone you know needs support in gaining a Learner, Restricted or Full licence, book in today.



We've got all the resources and advice you need to work through the different stages together. If you're a parent who's ready to teach someone to drive, we also have resources and specific 'Train the Trainer' workshops for you.

For more information on when our workshops are running, please visit the links below.

In these sessions, we provide:

- Info on the different stages of NZ's graduated driver licence
- Advice on how to stay safe when driving
- Resources to help work towards a Learners, Restricted or Full Licence
- Insights into what to expect on the test day
- An opportunity to ask questions, share experiences and obtain advice from experienced trainers.

For more information, please contact our road safety team.